



Royal Infirmary



Royal Hospital



Northern General Hospital

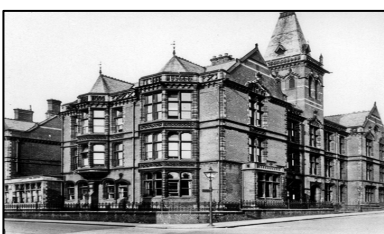
The Group's aims are to

- Preserve the history of all Sheffield's former and present day hospitals;
- Collect and preserve artefacts, memories, stories, photographs and items of memorabilia to save them from being lost to future generations;
- Erect displays of interest in display cases and cabinets at various safe locations around the hospitals on both the Northern and Central campuses;
- Attend local history exhibitions from time to time to stimulate interest and knowledge of the history of hospitals in Sheffield.
- Give occasional talks on the history of the hospitals to interested groups

The Group would like to hear from anyone who has memories, memorabilia, artefacts, stories or photos of any of the old Sheffield Hospitals. Perhaps you or members of your family worked there. If you or anyone else you know can help expand our collection then please contact us (see below).

Email: sheffhkg@gmail.com

Telephone: Sue Coulson, Business Manager, Board of Directors on 0114 2713071.



Jessop Hospital for Women



Nether Edge Hospital



Lodge Moor Hospital